

## **APPENDIX E**

### **OPTION DRAWINGS**



Option 1 (0.5% AEP SoP): Traditional permanent hard defences only, with Relocation and FFW

Ballater Flood Protection Study

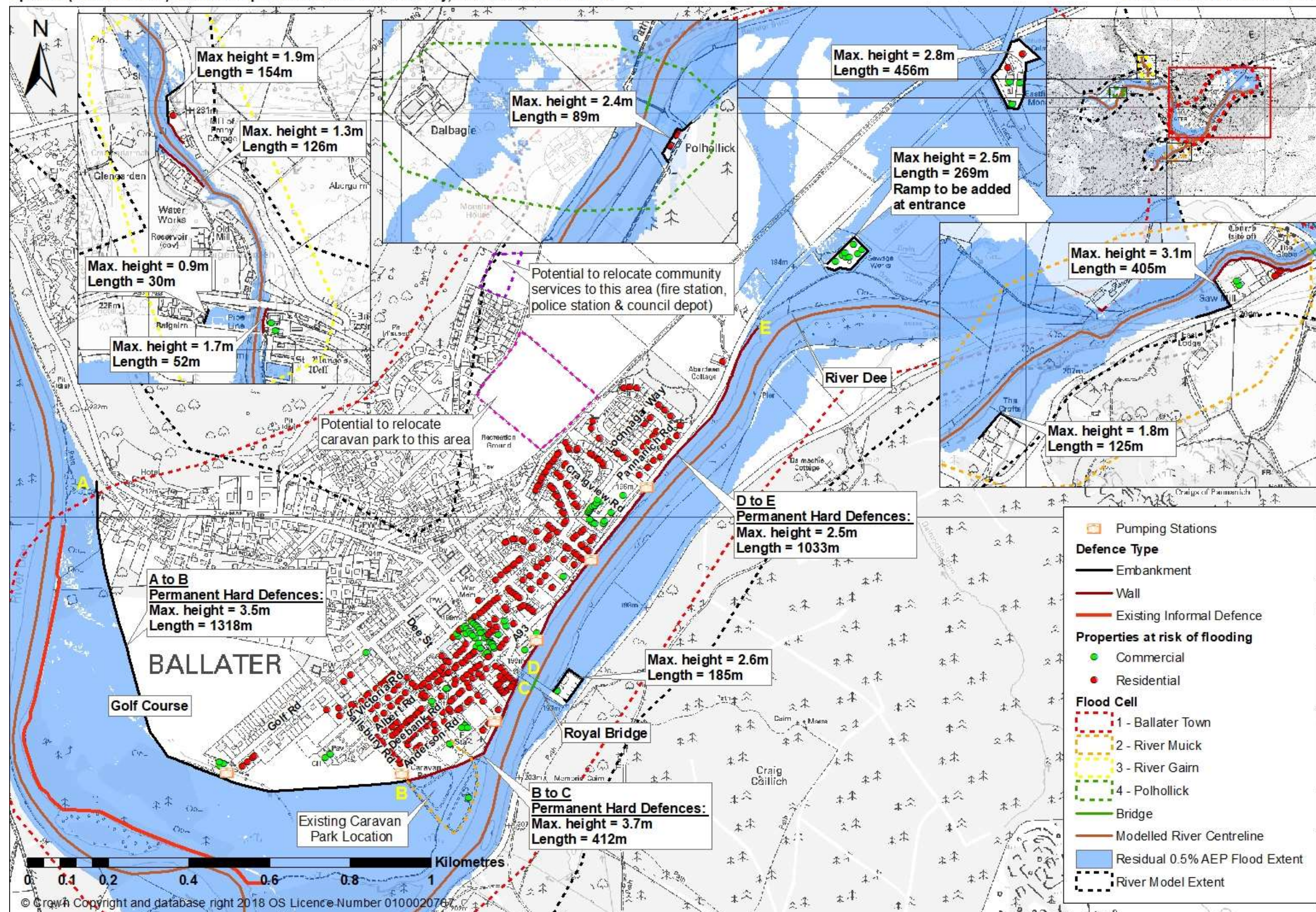


Figure 7.4 – Option 1: Traditional permanent hard defences only with relocation and FFW



Option 2 (0.5% AEP SoP): Combination of traditional permanent hard defences &amp; Self-Closing Flood Barriers with Relocation and FFW

Ballater Flood Protection Study

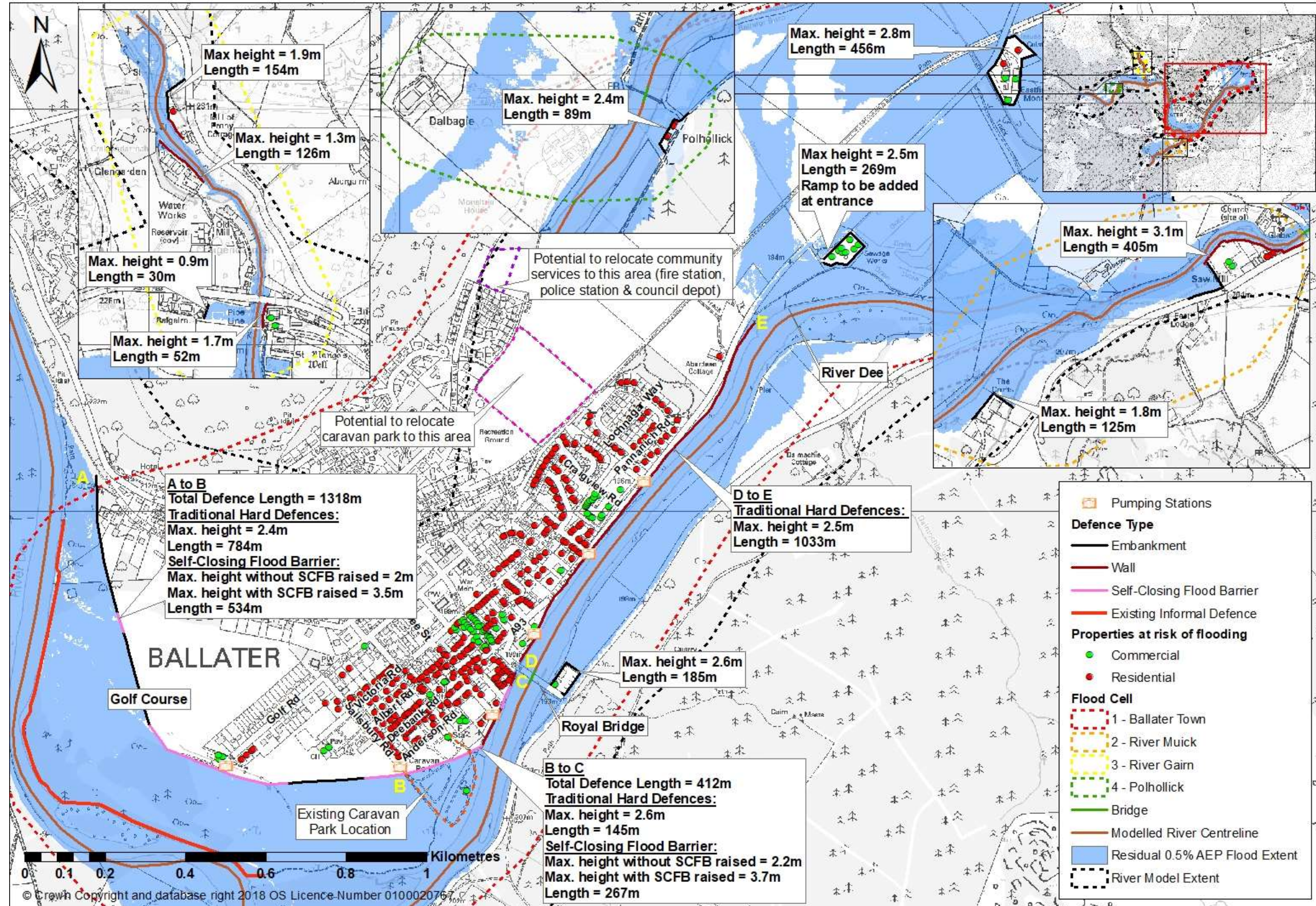


Figure 7.5 – Option 2: Combination of traditional permanent hard defences &amp; SCFB with relocation and FFW



Option 3 (0.5% AEP SoP): Combination of permanent hard defences and glass walls with relocation and FFW

Ballater Flood Protection Study

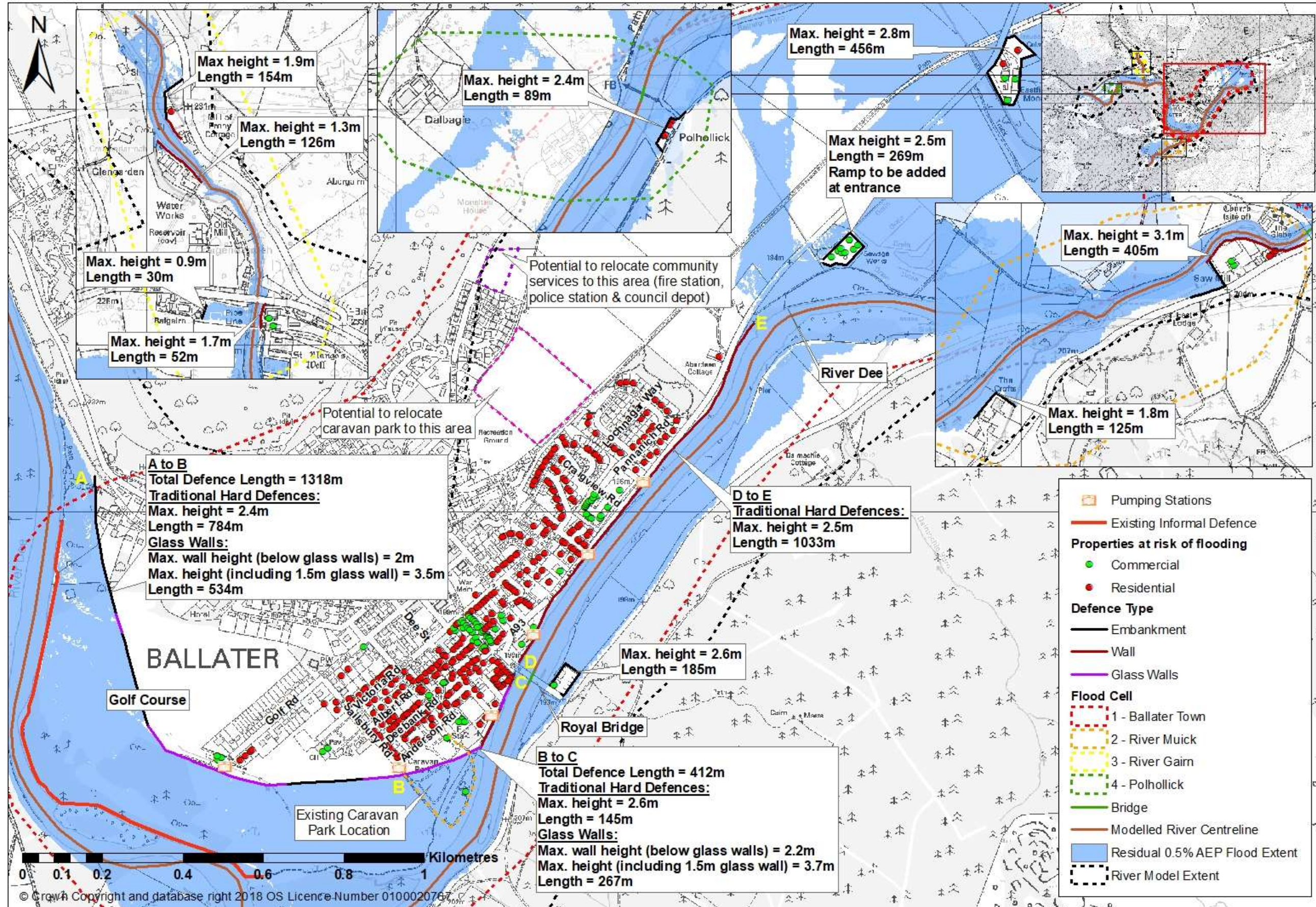


Figure 7.6 – Option 3: Combination of traditional permanent hard defences &amp; glass walls with relocation and FFW



Option 1A (0.5% AEP SoP): Combination of permanent hard defences, relocation, PLP/resilience measures for outlying properties &amp; FFW

Ballater Flood Protection Study

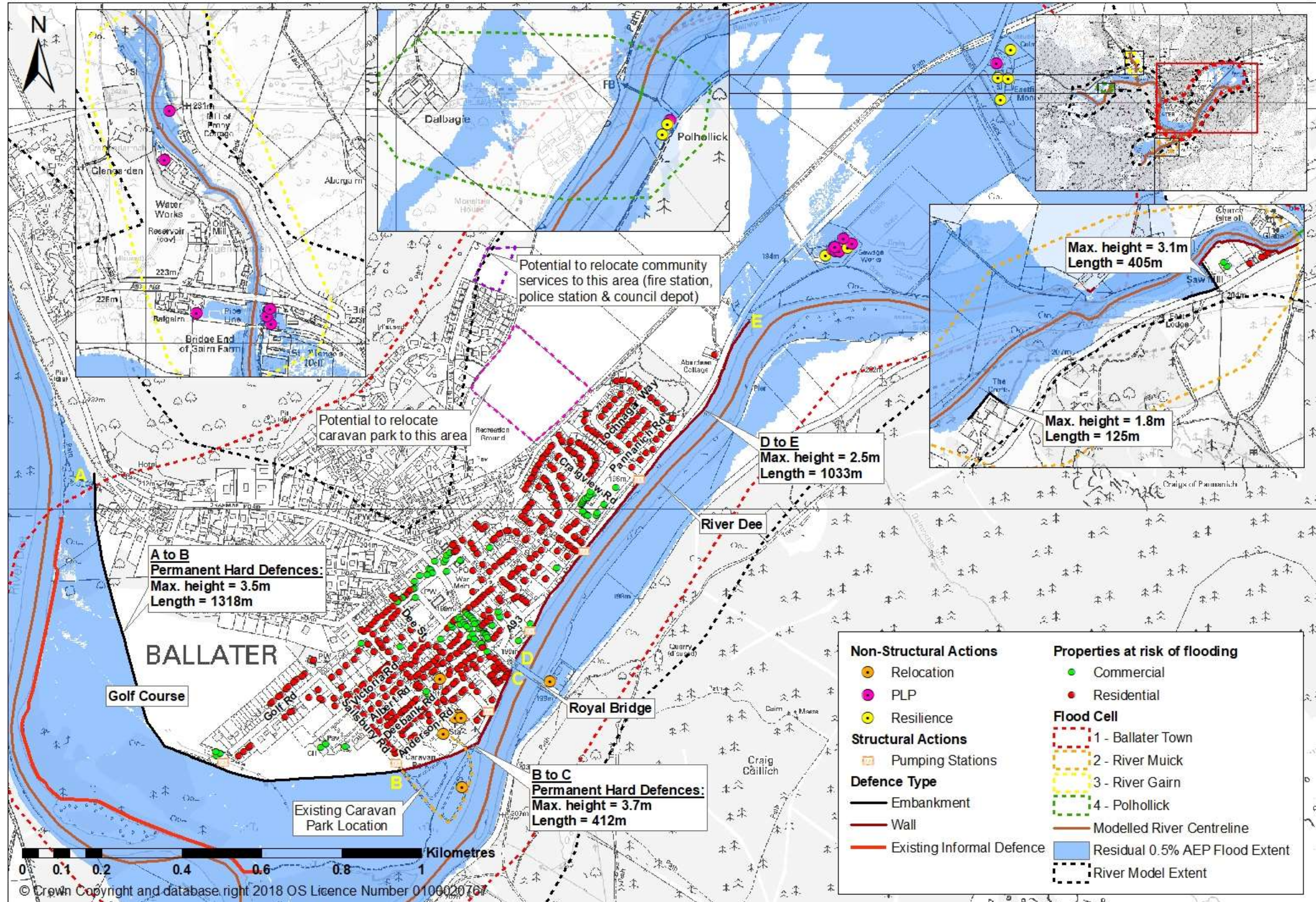


Figure 7.7 – Option 1A: Combination of permanent hard defences, relocation, PLP/resilience for outlying properties &amp; FFW



## Ballater Flood Protection Study



**Figure 7.8 – Option 2A: Combination of permanent hard defences, SCFB, relocation, PLP/resilience for outlying properties & FFW**



Option 3A (0.5% AEP SoP): Combination of permanent hard defences, glass walls, relocation, PLP/resilience measures for outlying properties &amp; FFW

Ballater Flood Protection Study

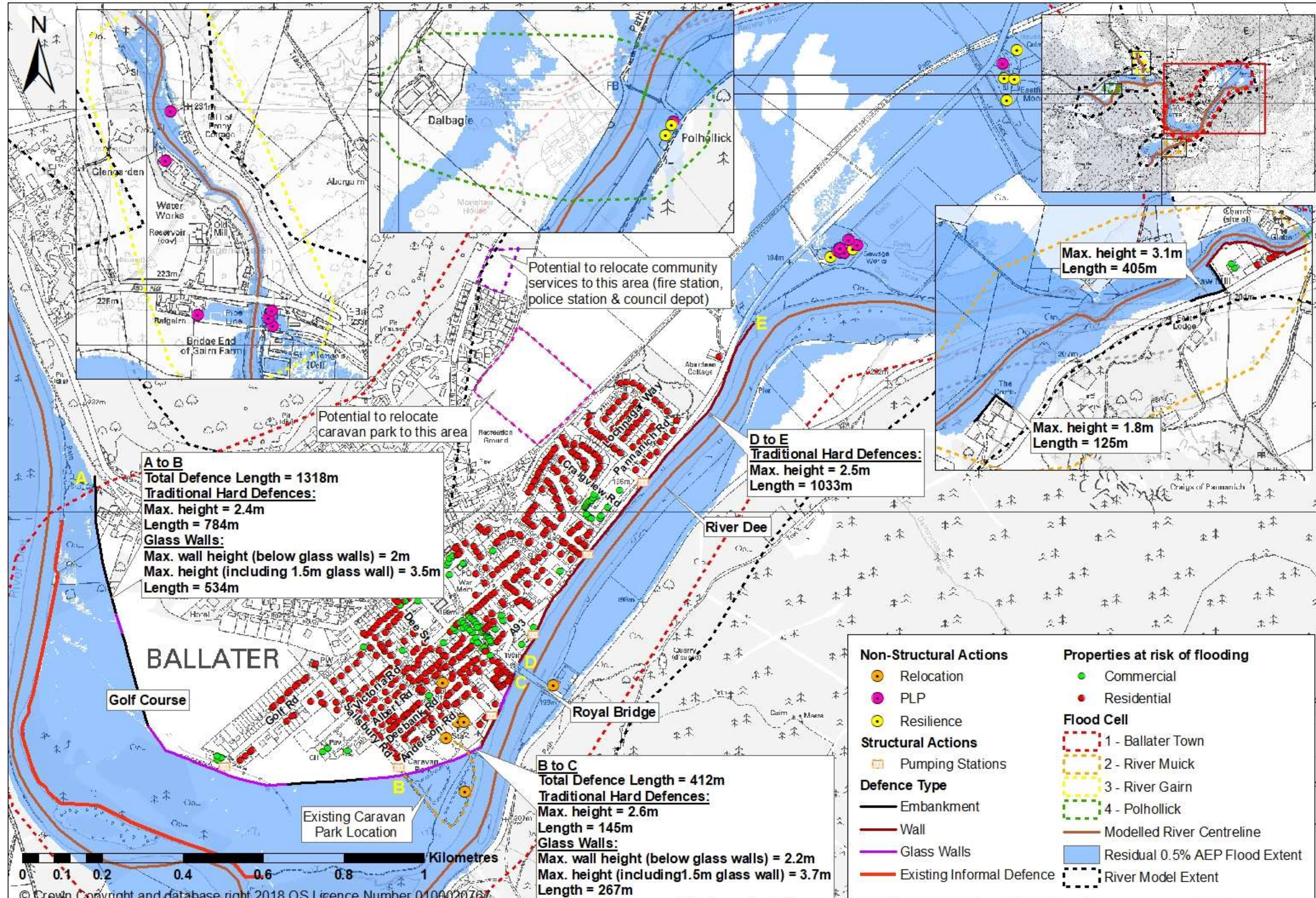


Figure 7.9 – Option 3A: Combination of permanent hard defences, glass walls, relocation, PLP/resilience for outlying properties &amp; FFW